

Trumpet in B $\flat$  2

# Joe's Last (re)Mix

for electric winds

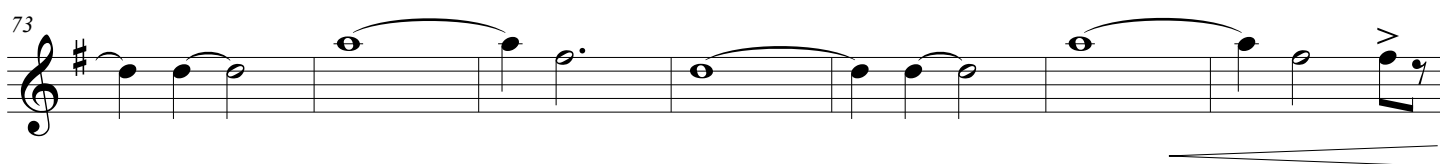
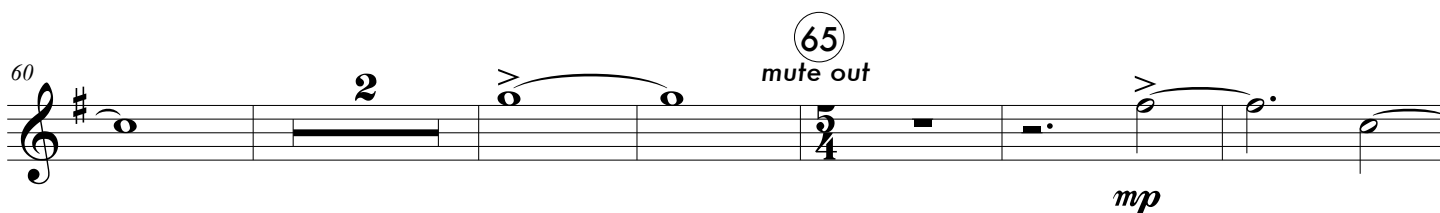
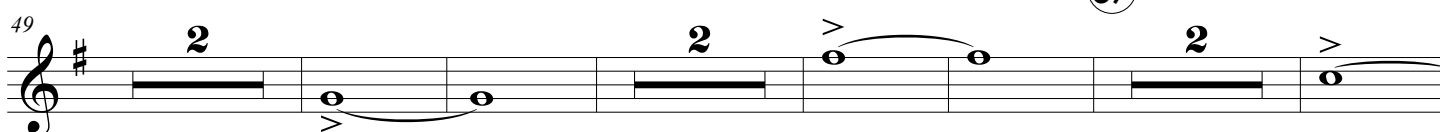
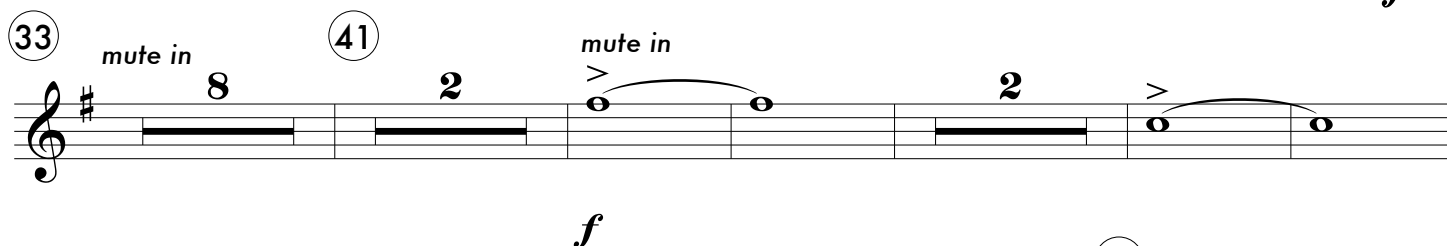
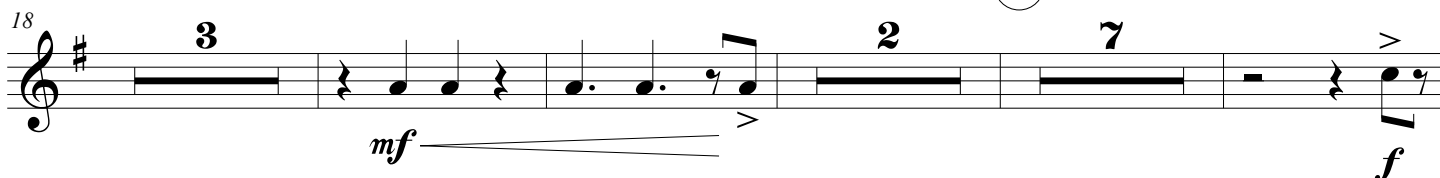
Robert McCarthy

Tanner Menard

$\text{♩} = 108$

loops [[ layers

(9)



(re)Mix - 2010 Robert McCarthy [www.asiab3.com](http://www.asiab3.com)

Source - 2000 Tanner Menard [www.tannermenard.archaichorizon.com](http://www.tannermenard.archaichorizon.com)

Distributed under CC Attribution-Noncommercial-Share Alike 3.0 United States

## Joe's Last (re)Mix

song ][ dance (83)

80

2 3 2

*f* *mf* *>*

90

2

*mf* *mf* *f*

97

2 8 20

(101) (109)

(129)

*f* *ff*

135

(139)

2

*mf*

143

4 2 4

(147) (155)

*f* *f* *ff*

156

(161)

*mf* *f* *ff*

162

168 waves ][ echos 175

6

*f* *fp*

This musical staff covers measures 168 to 175. It begins with a treble clef and a key signature of one sharp (F#). Measure 168 contains a quarter rest followed by two eighth notes (F#4 and A4) with upward accents. Measure 169 has a whole rest. Measure 170 features a six-measure rest, with the number '6' written above it. Measures 171 through 175 consist of a series of eighth notes (F#4, A4, B4, C5, B4, A4, G#4) with upward accents. The staff concludes with a half note (F#4) and a decrescendo hairpin.

179

4

*f* *fp*

This musical staff covers measures 179 to 188. It begins with a treble clef and a key signature of one sharp (F#). Measure 179 has a four-measure rest, with the number '4' written above it. Measures 180 through 188 contain a sequence of eighth notes (F#4, A4, B4, C5, B4, A4, G#4, F#4, E4, D4, C4) with upward accents. The staff ends with a decrescendo hairpin.

189

*f*

This musical staff covers measures 189 to 196. It begins with a treble clef and a key signature of one sharp (F#). Measures 189 through 196 feature a series of half notes (F#4, A4, B4, C5, B4, A4, G#4, F#4) with upward accents. The staff concludes with a decrescendo hairpin.

197

2

*ff* *ff*

This musical staff covers measures 197 to 204. It begins with a treble clef and a key signature of one sharp (F#). Measures 197 through 204 consist of a series of eighth notes (F#4, A4, B4, C5, B4, A4, G#4, F#4, E4, D4, C4) with upward accents. The staff ends with a decrescendo hairpin.